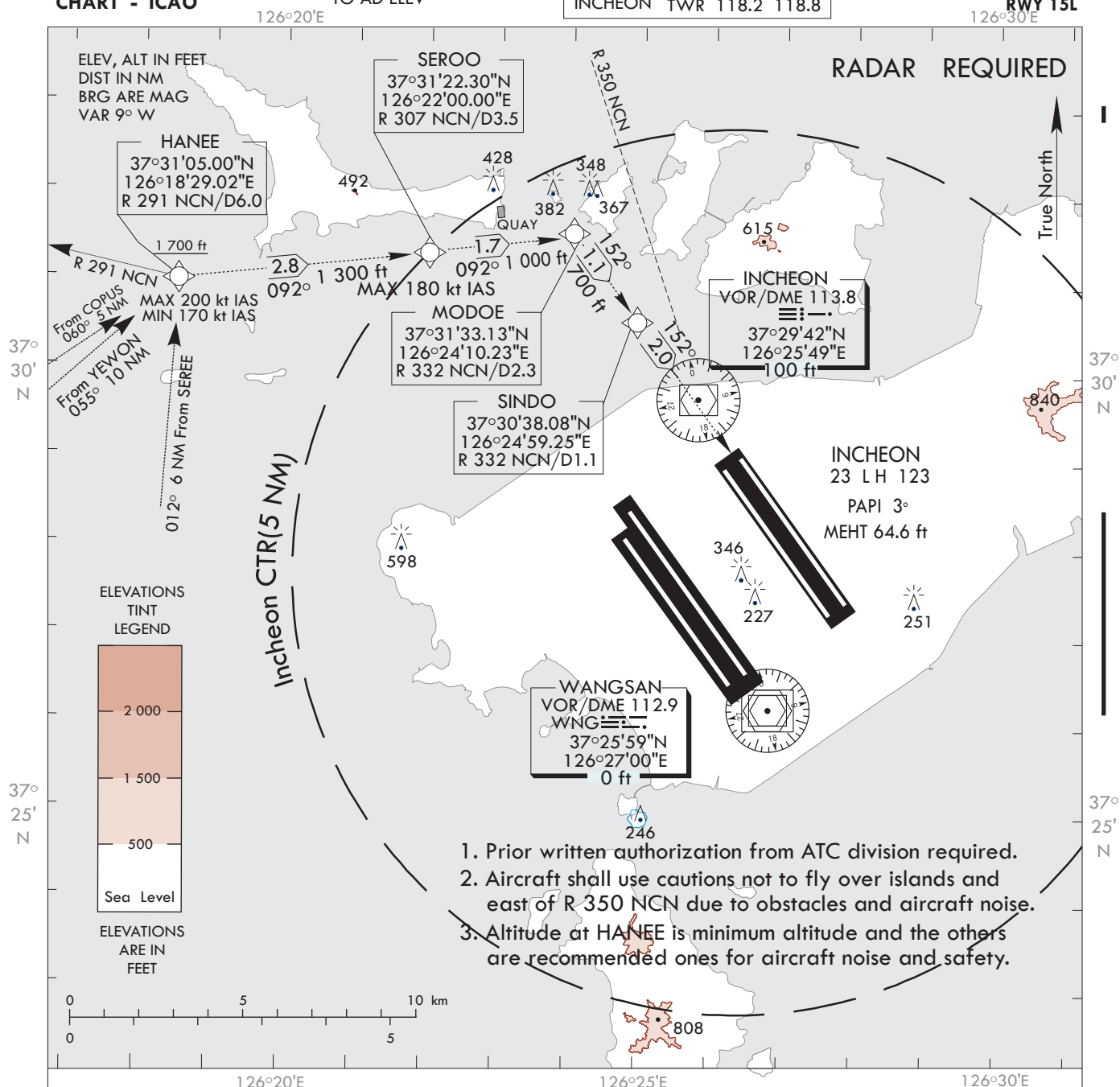


**VISUAL
APPROACH
CHART - ICAO**

AD ELEV 23 ft
HEIGHTS RELATED
TO AD ELEV

SEOUL APP 119.75
119.1
INCHEON TWR 118.2 118.8

**SEOUL/Incheon
HANEE Visual
RWY 15L**



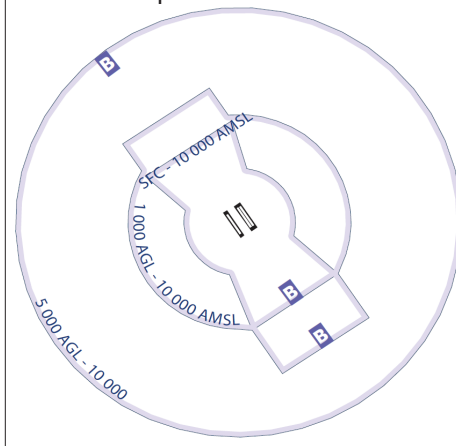
WEATHER MINIMUMS : CEILING 2 500 ft, VISIBILITY 8 km

GO-AROUND PROCEDURE : In the event of a go-around, after passing SINDO climb on RWY HDG to 3 000 ft as practical as possible or as directed by ATC.

GENERAL INFORMATION

1. RNAV is lateral guidance reference only and if unable to maintain visual contact with preceding aircraft or visual references, maintain 1 700 ft and report ATC as practical as possible.
※ For RNAV arrival procedure designed on the RNAV 1 Specification.
2. NON-RNAV equipped aircraft may fly this procedure by referencing visual references.
3. When closely spaced parallel visual approach is in progress, aircraft will not be authorized to overtake another aircraft flying on or onto the adjacent final approach course.

<Airspace Classification>



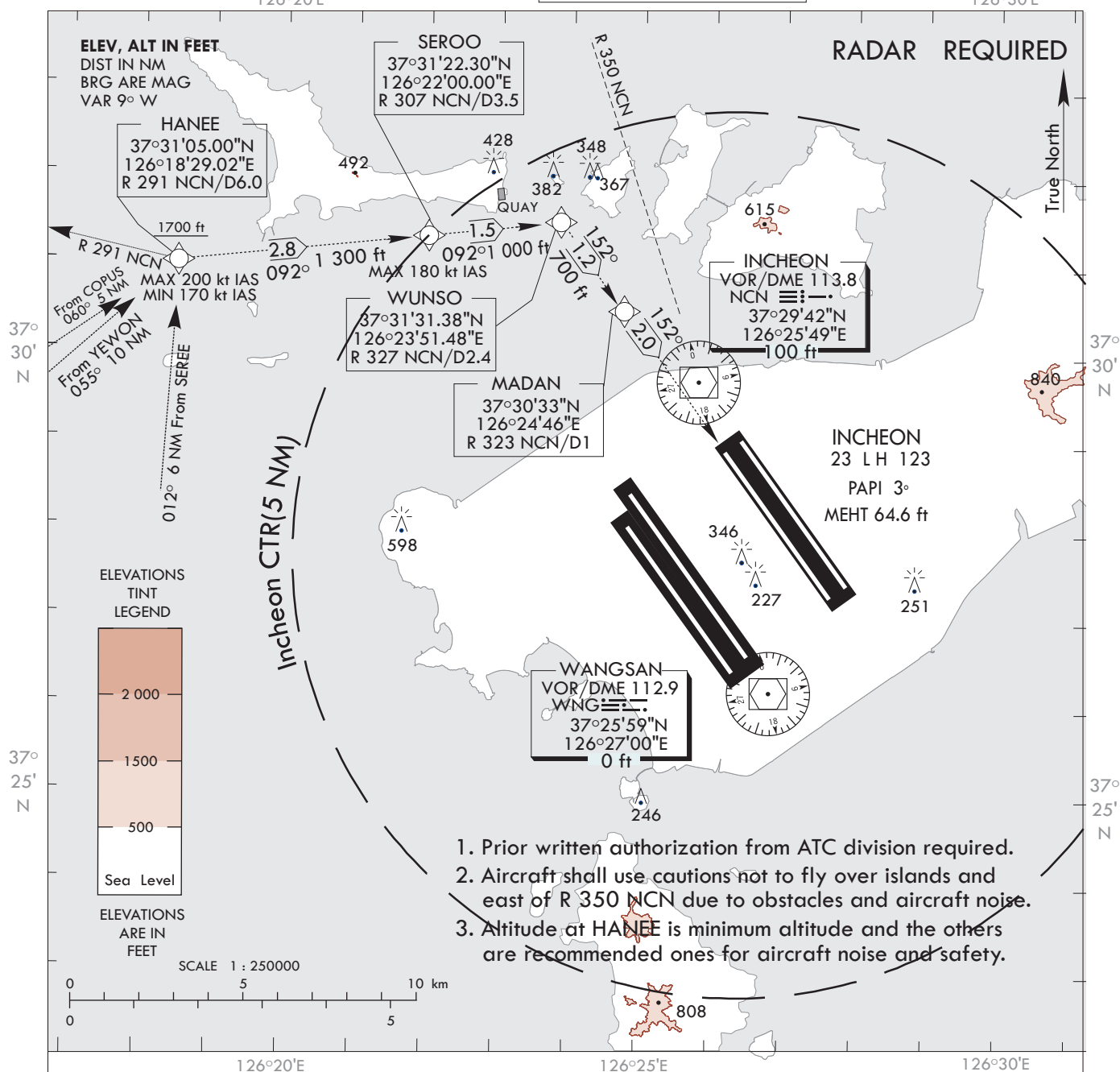
Change : Information of MAR VAG(8°W → 9° W) and Establishment of new RWY(16R/34L).

**VISUAL
APPROACH
CHART - ICAO**

AD ELEV 23 ft
HEIGHTS RELATED
TO AD ELEV

SEOUL APP 119.75
119.1
INCHEON TWR 118.2 118.8

**SEOUL/Incheon
HANEE Visual
RWY 15R**
126°30'E



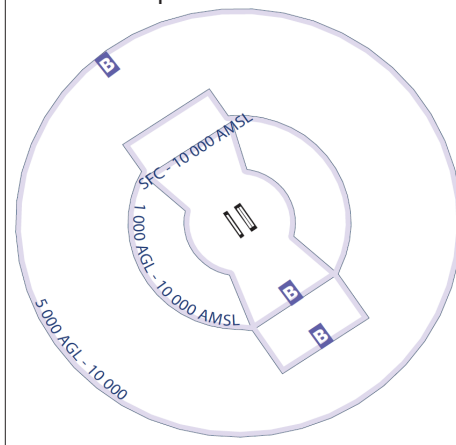
WEATHER MINIMUMS : CEILING 2 500 ft, VISIBILITY 8 km

GO-AROUND PROCEDURE : In the event of a go-around, after passing MADAN climb on RWY HDG to 3 000 ft as practical as possible or as directed by ATC.

GENERAL INFORMATION

1. RNAV is lateral guidance reference only and if unable to maintain visual contact with preceding aircraft or visual references, maintain 1 700 ft and report ATC as practical as possible.
※ For RNAV arrival procedure designed on the RNAV 1 Specification.
2. NON-RNAV equipped aircraft may fly this procedure by referencing visual references.
3. When closely spaced parallel visual approach is in progress, aircraft will not be authorized to overtake another aircraft flying on or onto the adjacent final approach course.

<Airspace Classification>



Change : Information of MAR VAG(8°W → 9° W) and Establishment of new RWY(16R/34L).